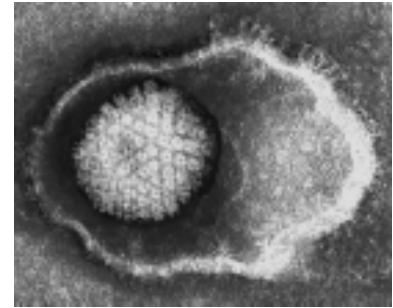


# Post-study survey

## Congenital cytomegalovirus infection

This post-study survey question is identical to the survey question administered before the initiation of the CPSP study on congenital cytomegalovirus (CMV) infection conducted from March 2005 to February 2008. The results of the two surveys will be compared to assess the educational benefit of participation in the CPSP.



**Cytomegalovirus**

Your contribution is greatly appreciated.

You see a three-day old infant in the newborn nursery who has symptoms and signs suggestive of congenital CMV infection.

If you had to choose **only one test** to confirm this diagnosis, which one of the following tests would you order?

- CMV IgG and IgM on cord blood
- Throat swab for CMV culture or PCR
- TORCH serology
- Urine specimen for CMV culture or PCR
- Unknown

### Additional learning points

- The CMV study confirmed 48 cases, and only 13 (27.1%) infants were treated for CMV.
- Nearly half of the 35 who were not treated had significant neurological abnormalities.
- Antiviral treatment with ganciclovir has shown clear benefits for hearing and developmental outcomes.

**Please return this survey with your monthly reporting form.**

**Thank you for your participation.**

02/2009