



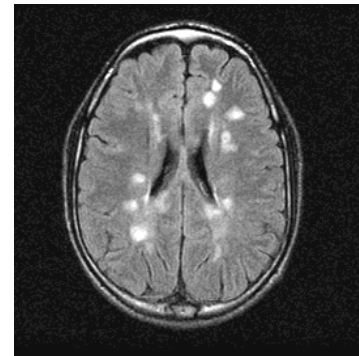
Survey

Acquired demyelinating syndromes of the central nervous system (CNS)

Starting April 1, 2004, the CPSP will begin surveillance for a new study on acquired demyelinating syndromes (ADS) of the CNS.

This pre-study survey is designed to increase awareness and clarify the multiple presentations and complexities of these serious conditions in children and youth characterized by:

- ◆ acute loss of vision – **optic neuritis**
- ◆ loss of function of the spinal cord – **transverse myelitis**
- ◆ **acute neurological deficit** due to demyelination
- ◆ encephalopathy and multifocal symptomatology – **acute disseminated encephalomyelitis (ADEM)**



Acquired demyelination

Many children will recover from these conditions, others will experience permanent neurological deficits, and a small portion will develop the recurrent demyelinating disease, multiple sclerosis.

Please take a few moments to answer the following:

1. In the past two years, have you cared for any patient less than 18 years of age with acquired demyelination of the CNS?

No Yes If yes, how many? _____

2. Did you consider the possibility that the child might develop recurrent demyelination such as multiple sclerosis?

No Yes

3. Were any of these children subsequently diagnosed with multiple sclerosis?

No Yes If yes, how many? _____

Please return this survey with your monthly reporting form.

Thank you for your participation.